

FISCAL YEAR	Job Number	SHEET NO	TOTAL SHEETS
	1099	1	5

STATE OF ARKANSAS
STATE HIGHWAY DEPARTMENT

PLAN OF PROPOSED BRIDGE
OVER
DRAINAGE DITCH

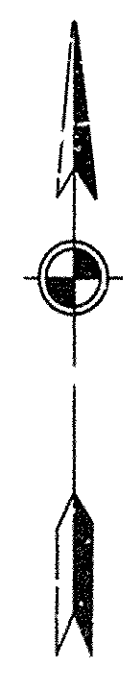
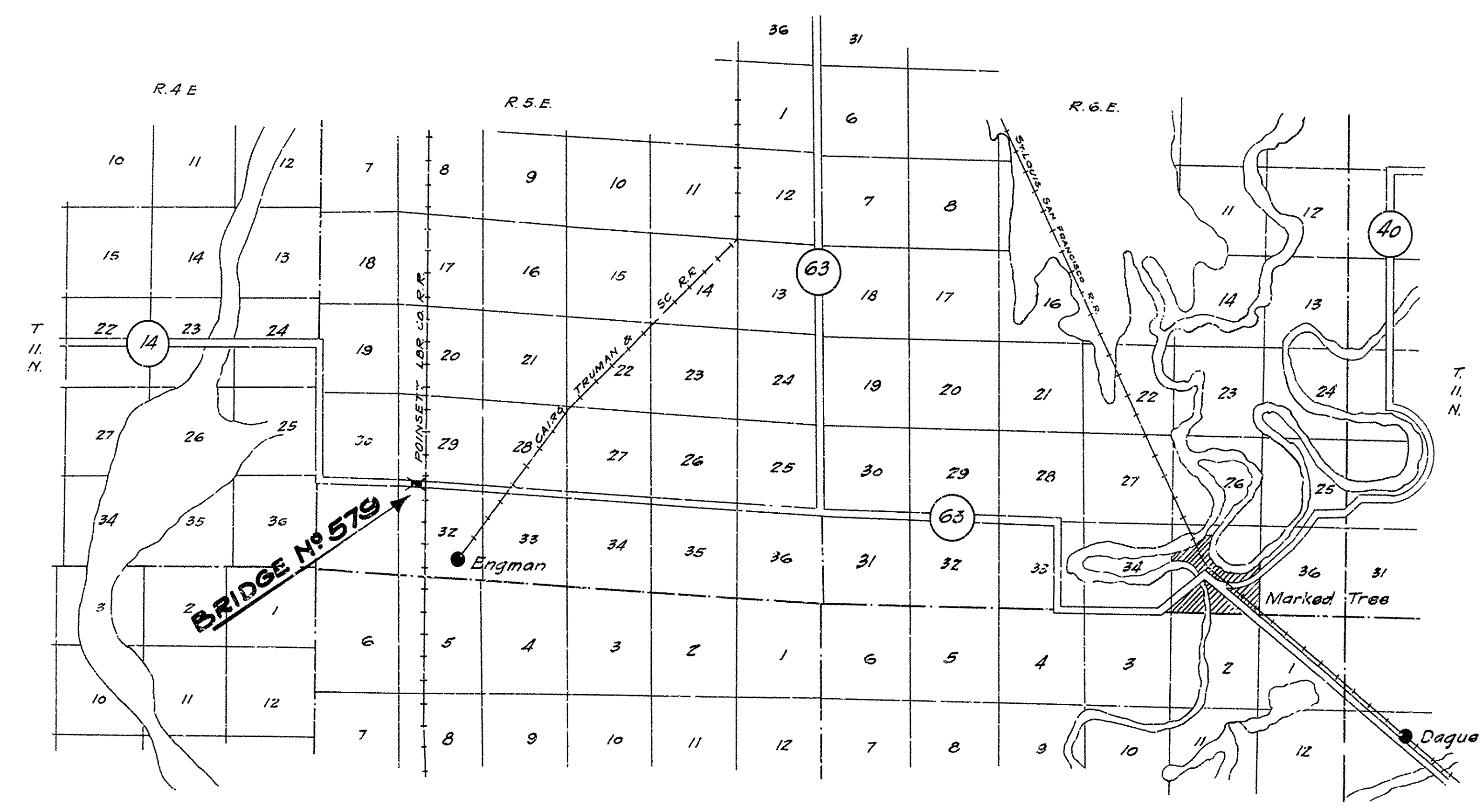
POINSETT CO.
ROUTE 14 SEC. 14
JOB N^o 1099
FEDERAL AID PROJECT No.

INDEX OF SHEETS

SHEET N ^o	DRWG. N ^o	TITLE SHEET
1	623	TITLE SHEET
2	624	LAYOUT
3	81	DETAILS 70' STEEL PONY TRUSS
4	625	PIERS & RETAINING WALLS
5	13	STD. 19 FT. TREATED TIMBER TRUSS

QUANTITIES

ITEM N ^o 12	EARTH EXCAVATION	560 CU. YD.
" 52	TREATED TIMBER	38,021 M ³ M
" 52	UNTREATED TIMBER	711 M ³ M
" 56	STRUCTURAL STEEL	65,654 LBS.
" 67	TREATED TIMBER PILING	2,060 LIN. FT.



LAYOUT
Scale: 1" = 1 Mile

GROSS LENGTH OF PROJECT 288 FT. = 0.05455 MI.
NET LENGTH OF PROJECT 288 FT. = 0.05455 MI.

APPROVED
COMMISSIONER - STATE LANDS, HIGHWAYS AND IMPROVEMENTS

APPROVED
STATE HIGHWAY ENGINEER

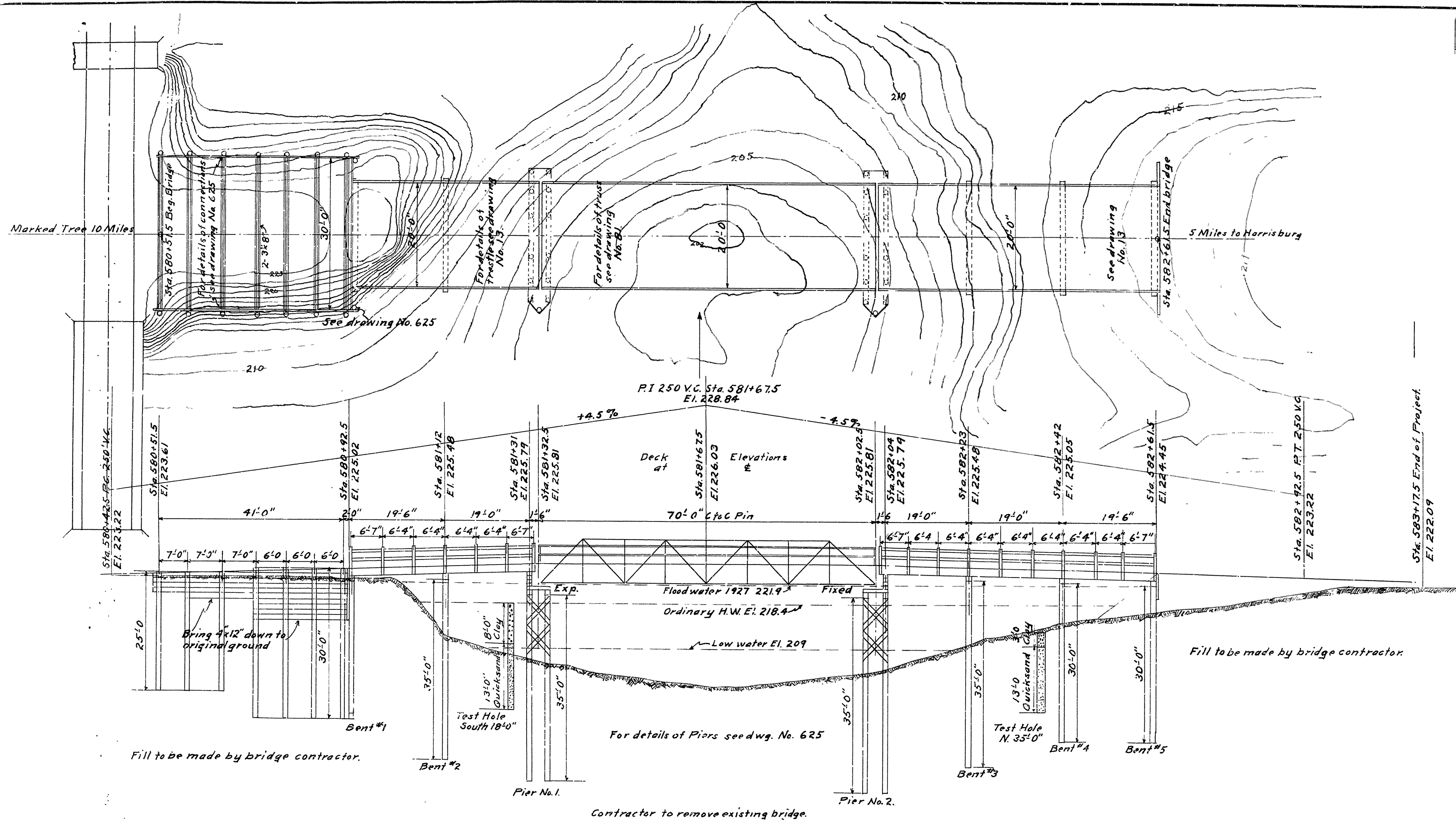
RECOMMENDED FOR APPROVAL
DISTRICT ENGINEER - U. S. BUREAU OF PUBLIC ROADS

RECOMMENDED FOR APPROVAL
CHIEF ENGINEER - U. S. BUREAU OF PUBLIC ROADS

APPROVED
DIRECTOR - U. S. BUREAU OF PUBLIC ROADS

M.B. Barber
BRIDGE ENGINEER

FISCAL YEAR	Job Number	SHEET NO.	TOTAL SHEETS
1927	1099	2	5



Note: - All timber except ha. druil to be treated. See Arkansas Std. Specifications.

LAYOUT OF
 BRIDGE OVER DRAINAGE DITCH
 5 MILES EAST OF HARRISBURG POINSETT COUNTY,
 ROUTE 14 SEC. 14
 ARKANSAS STATE HIGHWAY DEPARTMENT
 LITTLE ROCK, ARK.
 Drawn By: RWA Date: 2-4-28
 Traced By: " " Date: " "
 Checked By: " " Date: " "
 BRIDGE NO. 579 DRAWING NO. 624

M.B. Harris
 BRIDGE ENGINEER

Scale: 1 in. = 10 ft.